

# THERMAL LAMINATE PLASTERBOARD

**Speedline Thermal Laminate Plasterboard is a combination of a 12.5mm plasterboard, factory bonded to a high performance polyisocyanurate foam (PIR) insulant.**

**Various grades of plasterboard are available including standard, vapour check and moisture resistant. Other types of insulant are also available such as expanded polystyrene (EPS), extruded polystyrene (XPS), mineral wool and phenolic as a backing to the plasterboard.**

**Used to improve thermal performance.**

## Performance

*Thermal conductivities:*

- PIR 0.023 W/mk, EPS 0.038 W/mk, XPS 0.030 W/mk
- Phenolic 0.022 W/mk, Mineral wool 0.036 W/mk
- Plasterboard (Std & VC) 0.16 W/mk, (MR) 0.24 W/mk

*Square edge or Tapered edge board is available in all derivatives. A tapered edge board enables flat seamless walls as an alternative to the use of plaster.*

## Applications

- New build and refurbishment projects
- Upgrading of walls and ceilings to meet U-value requirements. Suitable for masonry walls, brick, block or concrete
- Room in a roof applications

## Key Benefits

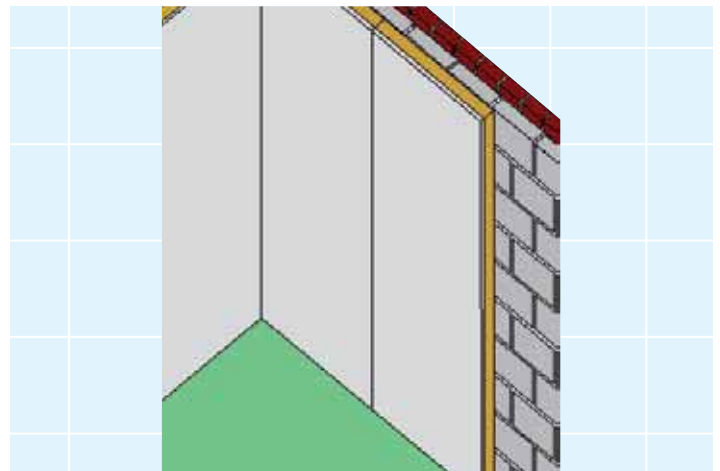
- High thermal performance, so energy saving
- CFC/HCHC free with Zero Ozone Depletion Potential
- Insulation, dry lining and vapour control layer in one board
- Quick and easy to install
- Cost effective

## Fixing Details

Boards may be fixed to the substrate by adhesive bonding, metal frame system timber battens or mechanical fixing.

*Dry wall adhesive* can be used on plain concrete or plastered walls.

Mechanical fixings (fire proof) are also recommend (3 per board) after the adhesive has set.



## DIMENSIONS

Board Thickness (mm)	Length (mm)	Width (mm)
25/12.5	2400	1200
30/12.5	2400	1200
35/12.5	2400	1200
38/12.5	2400	1200
50/12.5	2400	1200
60/12.5	2400	1200
70/12.5	2400	1200
75/12.5	2400	1200
80/12.5	2400	1200
90/12.5	2400	1200
100/12.5	2400	1200
Manufactured in any quantity		

**NB.** Speedline Thermal Laminates Plasterboard, when applied to the ceiling, must be directly fixed to the rafters after the removal of any existing plaster or plasterboards. The board is always screw fixed to the rafter.

**Speedline is a range of quality ancillary products for a wide variety of applications**

**General building and insulation essentials • Metal systems for drylining and partitioning • Drywall accessories**